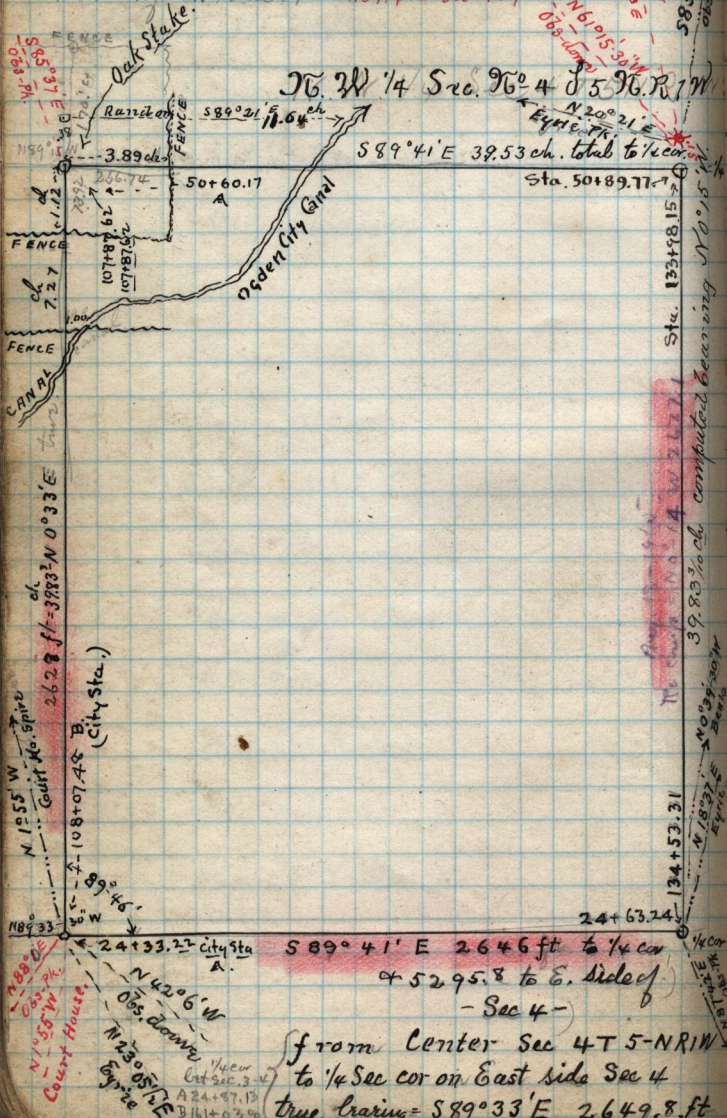


170

Water plug: 9.90 ft N. & 9.95 ft N. from  
N.E. cor. of N.W. 1/4 Sec 4, N.E. 1/4 J on 139 -



from Center Sec 4 T 5 - N R 7 W  
to 1/4 Sec cor on East side Sec 4  
true bearing = S 89° 33' E 2649.8 ft